



BMW 1 Reeks Hatch: 2ADJ929

Vinnnummer:	WBA7M710907H58260	Versionname:	1 Reeks Hatch 116dA (85 kW) 85kW/116pk 5D/P Auto-7
First Registrationdate:	26/02/2021	Fiscalpower:	
Expertise Mileage:	44357	Power Kw:	
Bodytype:		Body colour:	White
Gearbox:	Automatic	Type of rims (mounted):	Aluminium
Transmission:	Back	Parking lot:	B317
Fueltype:	Diesel		
Number of doors:	5		
Number of seats:	5		
Number head rests:	5		
Type of rims (mounted):	Aluminium		
Certificate of Conformity:	Yes		
Category:	Passenger Car		
Registration Certificate Car (BE):	Yes		
Bodywork:	Clean		
Interior:	Clean		

Options

Number of keys total	2	Radio
Number keys remote	2	Front parking sensors
Windows electric F		Rear parking sensors
Windows electric R		Fog lights (front)
Cruise Control		
Steering wheel multifunctional		
Seats F heated		
Navigation with screen		
Airco electronic		
Rims alloy		

Limited Technical Inspection

Idle position	OK	Sound engine	OK
Engine startingtime	OK		
Exhaust gass	OK		

Degree of wear

205/55/16/91 H				
Winter tyres:	Fr.L.	Bridgestone: 5 mm	Fr.R.	Bridgestone: 6 mm
	Re.L.	Bridgestone: 5 mm	Re.R.	Bridgestone: 5 mm
Tyre profile depth FL				5.0
Tyre profile depth FR				6.0
Tyre profile depth RL				5.0
Tyre profile depth RR				5.0
Tyre size FL				205/55 R 16 91 H
Tyre size FR				205/55 R 16 91 H
Tyre size RL				205/55 R 16 91 H
Tyre size RR				205/55 R 16 91 H
Tyre type FL				Winter
Tyre type FR				Winter
Tyre type RL				Winter
Tyre type RR				Winter
Tyre make FL				255
Tyre make FR				255
Tyre make RL				255
Tyre make RR				255

Assistance equipment

Number of charging cables (normal)	0	Compressor	No
Number of charging cables (rapid charge)	0		

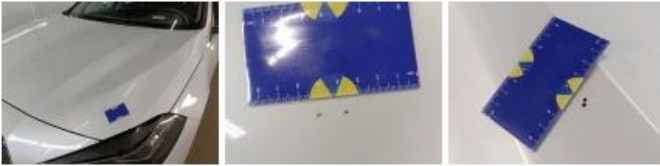
Interior, Stain, Cleaning



Door panel FL, Worn, Replace



Bonnet, Stone chip(s), Acceptable



Door RL, Scratch(es), Acceptable



Outside rear-view mirror housing L, Scratch(es), Acceptable



Compressor, Missing, Replace



Bumper R, Scratch(es), Acceptable



Door FR, Dent(s) and scratch(es), Acceptable



Door RR, Scratch(es), Polish



Alloy rim RR, Scratch(es), Acceptable

